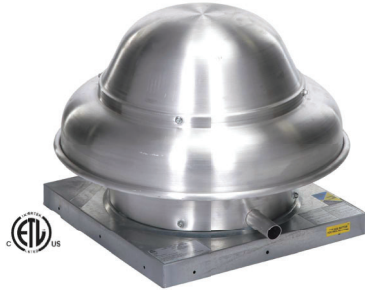


Direct Drive Centrifugal Downblast Exhaust Fans

For Special Custom Order Products - Once in production non-cancellable, non-returnable under any circumstance.

CDD Models

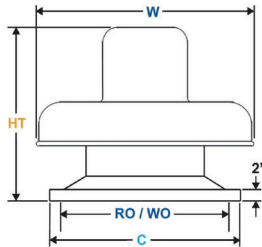
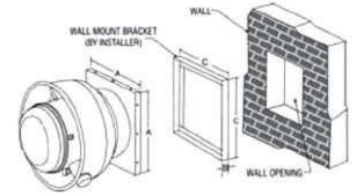


1 Year Warranty Features

- 115V, 1 Phase, 1 Speed, ODP Motors
- Durable and Quiet at Higher Static Pressures
- Non-Overloading, Backward Inclined Wheel
- Emergency Disconnect Switch Standard
- Variable Speed Control Standard
- Suitable for Roof or Wall Mount
- Bird Screen Standard



"Airmaster Fan certifies that Model CDD shown herein is (or are) licensed to bear the AMCA Seal. The ratings shown are based on tests and procedures performed in accordance with AMCA Publications 211 and AMCA Publication 311 and comply with the requirements of the AMCA Certified Ratings Program."



Catalog No.	CDD Dimensions (in.)				
	Ht	W	B	C	RO or WO
CDD100	14 1/2"	20 3/4"	2"	19"	13"
CDD120	16 1/4"	23 3/4"	2"	19"	13"
CDD300B-2	19 1/8"	26 1/4"	2"	21"	16"
CDD330B-2	19 1/8"	26 1/4"	2"	21"	16"
CDD550B-2	21 3/4"	29 3/4"	2"	21"	16"

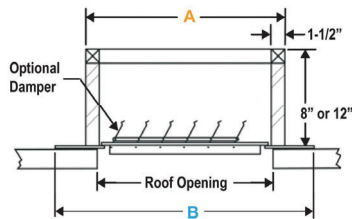
CDD Wall Mounting Details

Model	A	C	Wall Opening
CDD100	19"	18 1/2"	13"
CDD120	19"	18 1/2"	13"
CDD300B	21"	20 1/2"	16"
CDD330B	21"	20 1/2"	16"
CDD500B	21"	20 1/2"	16"

EDP No.	Catalog No.	Wheel Dia.	HP	RPM	Max Sones	Capacity (CFM) @ "SP in. W.G.								Ship Wt.
						0"	1/8"	1/4"	3/8"	1/2"	5/8"	3/4"	1"	
32446	CDD100-2	9"	1/10	1600	7.4	510	470	425	370	300	175	---	---	30
32447	CDD120-2	10 1/2"	.18	1600	12.2	945	880	800	725	650	550	---	---	35
32727	CDD300B-2	10 3/4"	1/6	1625	13.4	1410	1340	1265	1190	1110	1040	950	790	45
32449	CDD330B-2	11 3/4"	1/3	1600	14.2	1310	1250	1190	1110	1030	950	860	680	45
32451	CDD550B-2	12"	1/2	1600	17.4	2400	2300	2210	2120	2050	1910	1850	1600	50

Speed Control allows for CFM range to 50% stated.

*Performance shown is for installation type A: Free Inlet, Free Outlet. Performance ratings do not include the effects of appurtenances in the airstream. Power rating (BHP) does not include transmission losses. The sound ratings shown are loudness values in fan sones at 5 ft. (1.5 m) in a hemispherical free field calculated per AMCA Standard 301. Values shown are for Installation Type A: Free inlet hemispherical sone levels.



Gravity Damper & Accessories

EDP No.	Catalog No.	Used with CDD Models Catalog No.	Ship Weight
32452	BD14.5A	CDD100-2, CDD120-2	3
32453	BD16.75A	CDD300B-2, CDD330B-2, CDD550B-2	4
94283	---	CDD100-2, CDD120-2, CDD300B-2, CDD330B-2, CDD550B-2	5

Curbs

EDP No.	Catalog No.	Curb Size	Used with CDD Models Catalog No.	Curb Dimensions			
				A Sq.	B Sq.	Roof Opening	Damper Catalog No.
31100	PACA17.75-8	8"	CDD100-2 CDD120-2	17 3/4"	23 3/4"	13"	BD14.5A
31101	PACA17.75-12	12"	CDD100-2 CDD120-2	17 3/4"	23 3/4"	13"	BD14.5A
31102	PACA20-8	8"	CDD300B-2 CDD330B-2 CDD550B-2	20"	24"	16"	BD16.75A
31103	PACA20-12	12"	CDD300B-2 CDD330B-2 CDD550B-2	20"	24"	16"	BD16.75A

*Curb Hinge Available - EDP No. 62000

Notes: Pitched and Peaked Curbs Available. For Pitched Roof Curb Price, multiply flat roof curb price by 1.67. For Peaked Roof Curb Price, multiply flat roof curb price by 2.22. Please specify Pitched or Peaked when ordering. Metal roofs, consult factory for sizing and pricing. Wall Mount Brackets Available, contact factory.



Warning: Cancer and Reproductive Harm www.P65Warnings.ca.gov
This warning is applicable to all products on this page, see page i2 for more information