

# Low Pressure Belt Drive Exhaust Fans

115V, 230/460V

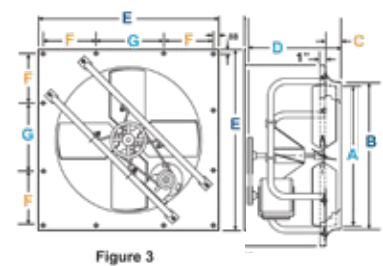
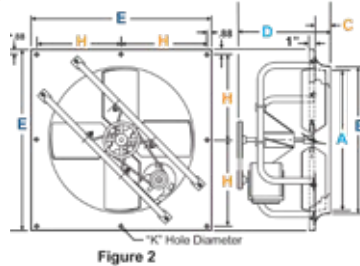
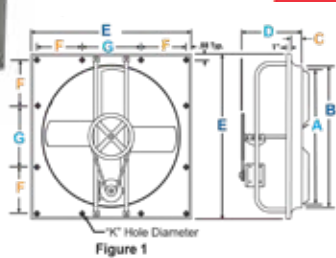
PB Models

1 Year Warranty

**Features**

- For Supply Duty, add "S" prefix to EDP Number and use list price divided by 0.80.
- If used for Supply, a Motor Actuator Kit must be Utilized with a shutter
- Fans with Motor and Drive Shipped Mounted
- Completely Assembled - Ready to Install
- Available for Exhaust or Supply
- Economy Wall Exhaust Fan

**Supply Duty are custom orders: non-cancellable, non-returnable once in production**



**Dimensions**

Prop Dia.	See Figure	A	B	C	D	E	F	G	H	K	# OF HOLES
24"	2	24	24.5	2.5	17.875	30	---	---	14.12		8
30"	2	30	30.5	3.63	18.375	36	---	---	17.12		8
36"	3	36	36.5	3.5	18.625	42	10	20.25	---	0.62	12
42"	1	42	42.5	3.25	24.75	48	13	20.25	---		12
48"	1	48	48.5	3.25	24.75	54	16	20.25	---		12

Motor Voltage Key		
1 Phase	1 Speed	115/230V
3 Phase	1 Speed	230/460V

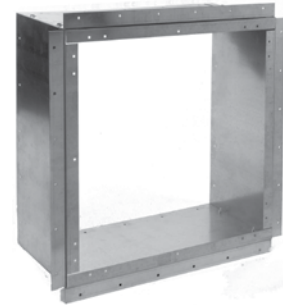
EDP No.	Catalog No.	Prop Dia.	HP	Fan RPM	Capacity (CFM) @ "SP		Max. Sones @ 5'	Ship Wt.
					0"	1/8"		
25602	PB24RA-F1A	24"	1/3	710	4973	3862	10.21	53
25612	PB24RA-G1A	24"	1/2	850	5953	5001	14.2	55
25811	PB24RA-G8A	24"	1/2	850	5953	5001	14.2	59
25622	PB30RA-F1A	30"	1/3	510	7012	5163	9.0	60
25632	PB30RA-G1A	30"	1/2	600	8249	6720	11.7	64
25831	PB30RA-G8A	30"	1/2	600	8249	6720	11.7	59
25652	PB36RA-F1A	36"	1/3	375	9048	6980	8.5	69
25662	PB36RA-G1A	36"	1/2	440	10616	8120	11.5	72
25861	PB36RA-G8A	36"	1/2	440	10616	8120	11.5	69
25682	PB42R-F1A	42"	1/3	340	10808	6812	8.4	97
25692	PB42RA-G1A	42"	1/2	386	12271	9304	10.8	100
25891	PB42RA-G8A	42"	1/2	386	12271	9304	10.8	98
25702	PB42RA-H3A	42"	3/4	445	14146	11672	14.0	109
25712	PB42RA-I3A	42"	1	495	15736	13568	16.8	107
25911	PB42RA-I8A	42"	1	495	15736	13568	16.8	105
25722	PB48RA-G1A	48"	1/2	320	14609	10154	10.1	110
25921	PB48RA-G8A	48"	1/2	320	14609	10154	10.1	112
25732	PB48RA-H3A	48"	3/4	370	16891	13393	15.0	115
25742	PB48RA-I3A	48"	1	406	18535	15457	16.8	125
25941	PB48RA-I8A	48"	1	406	18535	15457	16.8	127



## PB Accessories



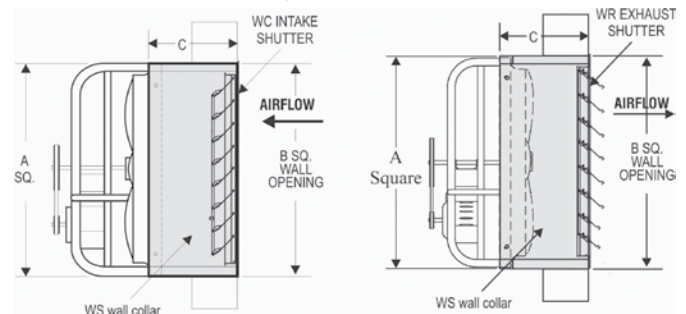
### WS Wall Collar



### Wall Shutters - Automatic

EDP No.	Catalog No.	Description
22641	WC24	Supply
22975	EASR-MF26	Exhaust
22651	WC30	Supply
22976	EASR-MF32	Exhaust
22661	WC36	Supply
22977	EASR-MF38	Exhaust
22671	WC42	Supply
22978	EASR-MF44	Exhaust
22681	WC48	Supply
22979	EASR-MF50	Exhaust

WC Supply Shutters are not weather resistant. It is recommended that the WC be used with a weatherhood. See page 60 for EASR and WC shutter selection/installation information, ship weights and cautions.



EDP No.	Catalog No.	Dimensions (in.)			Ship Wt.
		A Sq.	B Sq.	C	
06887	WS24	30	31	14	31
06888	WS30	36	37	14.5	45
06889	WS36	42	43	17	61
06890	WS42	48	49	19	89
06891	WS48	54	55	21	112

**Note:** When an EASR or WC shutter is used for exhaust or supply and mounted remote from the fan, a WS Wall Collar is not needed. The shutter is installed directly on the wall and a Motor Actuator Kit must be utilized.



**Prop Side (Front)**



**Motor Side (Rear)**

### Safety Guards

EDP No.	Catalog No.	Description
23675	24FG	Prop Side (Front)
23620	24RG	Motor Side (Rear)
23680	30FG	Prop Side (Front)
23625	30RG	Motor Side (Rear)
23685	36FG	Prop Side (Front)
23630	36RG	Motor Side (Rear)
23690	42FG	Prop Side (Front)
23635	42RG	Motor Side (Rear)
23695	48FG	Prop Side (Front)
23640	48RG	Motor Side (Rear)

See page 61 for safety prop side (front) and motor side (rear) guard dimensions.

### Optional Weatherhoods

EDP No.	Catalog No.	Ship Wt.
99915	WH24	67
99916	WH30	168
99917	WH36	206
99921	WH42	231
99923	WH48	303

See page 62 for Weatherhood Dimensions.

### Supply Motor Kits

EDP No.	Catalog No.	Description
22900	MK5047-B	120/240V, for 9"-36" Supply Shutters
22905	MK5047-C	440V, for 9"-36" Supply Shutters
22908	MK5047-E	550V, for 9"-36" Supply Shutters
22910	MK4782-F	120/420V, for 42"-54" Supply Shutters
22915	MK4782-C	440V, for 42"-54" Supply Shutters
22918	MK4782-E	550V, for 42"-54" Supply Shutters