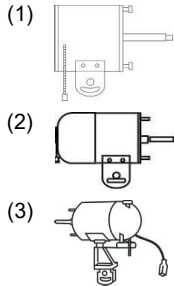


Commercial Air Circulators

Component Parts / Accessories

Motors

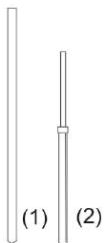


EDP No.	Catalog No.	Ship Wt.	Description
70013	I-1820TEM	10	115V, 1/15HP, TEAO, ball bearing, 1/2" Shaft dia, 2 speed switch, 10' cord and plug
37430	O-3B	23	Commercial Oscillating motor, 1/4 HP, 1 Phase, 3 Speed, 115V, 2.8 Amps, TEAO ball bearing, 5/8" diameter shaft. NOTE: Oscillating motor not to be used in UPSIDE-DOWN position.
78018	C-1A	19	Commercial Non-Oscillating motor, 1/4 HP, 3.5 Amp, 1 Phase, 3 Speed, TEAO, ball bearing 5/8" diameter shaft, 15' power cord.
78019	I-3A	22	115V, 1/3HP, Single Phase, TEAO ball bearing, PSC type, 5/8" shaft dia, 3 speed switch, 15' cord & plug

Capacitors

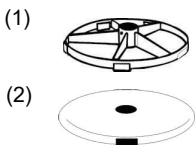
EDP No.	Catalog No.	Ship Wt.	Description
01683	Capacitor	1	Capacitor - 8 MFD (for 78018 motors)
01430	Capacitor	1	Capacitor - 20 MFD (for 37430 motors)

Pedestals



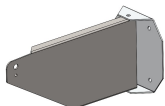
EDP No.	Catalog No.	Ship Wt.	Description
73103	C-2030NP	7	5' high floor model. Top section provides 33 1/2" counter model. Use only with I-2030B Base. (1)
73101	I-2030AP	12	5' to 8' adjustable floor model. (2)

Bases



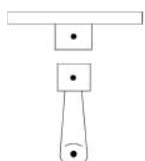
EDP No.	Catalog No.	Ship Wt.	Description
21153	I-2030B	24	Open base. (1)
21165	A-786B-1	17	Solid base, 26" diameter. (2)
21166	A786B-2	34	Solid base, 32" diameter. (2)

Wall Mount Bracket



EDP No.	Catalog No.	Ship Wt.	Description
37772	IAC-WB	7	Recommended for use with oscillating and non-oscillating motors. Includes Safety Cable Kit.

Vertical Mount Bracket

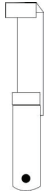


EDP No.	Catalog No.	Ship Wt.	Description
11456	DJ-CM	7	Vertical mount for use with industrial 20", 24", and 30" non-oscillating fans. Safety Cable Kit Included NOT FOR USE WITH OSCILLATING MOTORS



Component Parts / Accessories

Suspension Mount Bracket



EDP No.	Catalog No.	Ship Wt.	Description
75003	C-2030S	3	Use with commercial & industrial non-oscillating air circulators. Includes Safety Cable Kit.

I-Beam Mount Bracket



EDP No.	Catalog No.	Ship Wt.	Description
37784	IAC-BM-1	13	For use with I-Beam mounting. Includes Safety Cable Kit. NOT FOR USE WITH OSCILLATING MOTORS

Safety Cable



EDP No.	Catalog No.	Ship Wt.	Description
21204	Safety Kit	3	12' of 1/16" diameter cable, two (2) cable clamps and instructions.

Accessories



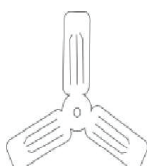
EDP No.	Catalog No.	Ship Wt.	Description
70601	AMFW30K	5	Snap-on wheel kit with set screw lock for 18" to 30" pedestal fans, except I-2030B.
01723	Switch	2	2 Speed / 3 Speed Pull Chain Switch

Guards



EDP No.	Catalog No.	Ship Wt.	Description
21070	AC24-G	14	24" guard.
21080	AC30-G	20	30" guard.

Propellers



EDP No.	Catalog No.	Ship Wt.	Description
72458	C-24B2	5	24" Propeller with 5/8" bore, includes bushing to adapt propeller to fit motors with 1/2" shaft
73058	C-30B	7	30" Propeller with 5/8" bore, includes bushing to adapt propeller to fit motors with 1/2" shaft