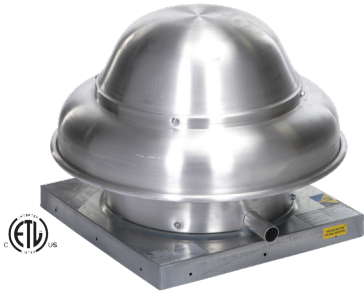


# Direct Drive Centrifugal Exhaust Fans

For Special Custom Order Products - Once in production non-cancellable, non-returnable under any circumstance.

## CDD Models

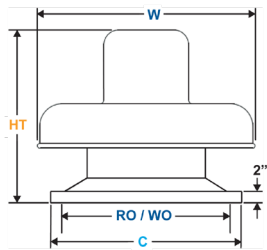
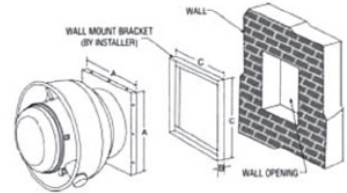


### 1 Year Warranty Features

- 115V, 1 Phase, 1 Speed, ODP Motors
- Durable and Quiet at Higher Static Pressures
- Non-Overloading, Backward Inclined Wheel
- Emergency Disconnect Switch Standard
- Variable Speed Control Standard
- Suitable for Roof or Wall Mount
- Bird Screen Standard



"Airmaster Fan certifies that Model ARD shown herein is (or are) licensed to bear the AMCA Seal. The ratings shown are based on tests and procedures performed in accordance with AMCA Publications 211 and AMCA Publication 311 and comply with the requirements of the AMCA Certified Ratings Program."



EDP No.	CDD Dimensions (in.)				
	Ht	W	B	C	RO or WO
32446	14 1/2"	20 3/4"	2"	19"	13"
32447	16 1/4"	23 3/4"	2"	19"	13"
32727	19 1/8"	26 1/4"	2"	21"	16"
32449	19 1/8"	26 1/4"	2"	21"	16"
32451	21 3/4"	29 3/4"	2"	21"	16"

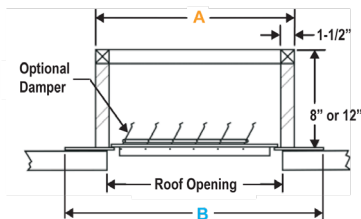
### CDD Wall Mounting Details

EDP No.	A	C	Wall Opening
32446	19"	18 1/2"	13"
32447	19"	18 1/2"	13"
32727	21"	20 1/2"	16"
32449	21"	20 1/2"	16"
32451	21"	20 1/2"	16"

EDP No.	Catalog No.	Wheel Dia.	HP	RPM	Max Sones	Capacity (CFM) @ "SP in. W.G.								Ship Wt.
						0"	1/8"	1/4"	3/8"	1/2"	5/8"	3/4"	1"	
32446	CDD100-2	9"	1/10	1600	7.4	510	470	425	370	300	175	---	---	30
32447	CDD120-2	10 1/2"	.18	1600	12.2	945	880	800	725	650	550	---	---	35
32727	CDD300B-2	10 3/4"	1/6	1625	13.4	1410	1340	1265	1190	1110	1040	950	790	45
32449	CDD330B-2	11 3/4"	1/3	1600	14.2	1310	1250	1190	1110	1030	950	860	680	45
32451	CDD550B-2	12"	1/2	1600	17.4	2400	2300	2210	2120	2050	1910	1850	1600	50

Speed Control allows for CFM range to 50% stated.

\*Performance shown is for installation type A: Free Inlet, Free Outlet. Performance ratings do not include the effects of appurtenances in the airstream. Power rating (BHP) does not include transmission losses. The sound ratings shown are loudness values in fan sones at 5 ft. (1.5 m) in a hemispherical free field calculated per AMCA Standard 301. Values shown are for Installation Type A: Free inlet hemispherical sone levels.



## Gravity Damper & Accessories

EDP No.	Used with CDD Models EDP No.	Ship Weight
32452	32446, 32447	3
32453	32727, 32449, 32451	4
94283	32446, 32447, 32727, 32449, 32451	5

## Curbs

EDP No.	Curb Size	Used with CDD Models EDP No.	Curb Dimensions			
			A Sq.	B Sq.	Roof Opening	Damper EDP No.
31100	8"	32446, 32447	17 3/4"	23 3/4"	13"	32452
31101	12"	32446, 32447	17 3/4"	23 3/4"	13"	32452
31102	8"	32727, 32449, 32451	20"	24"	16"	32453
31103	12"	32727, 32449, 32451	20"	24"	16"	32453

\*Curb Hinge Available - EDP No. 62000

Wall Mount Brackets Available, contact factory.



**Warning: Cancer and Reproductive Harm** [www.P65Warnings.ca.gov](http://www.P65Warnings.ca.gov)  
This warning is applicable to all products on this page.