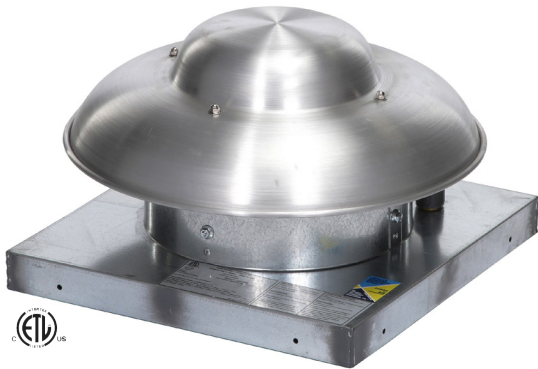


Direct Drive Propeller Rooftop Exhaust Fans

For Special Custom Order Products - Once in production non-cancellable, non-returnable under any circumstance.

ARD Models

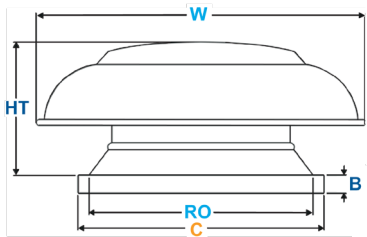


1 Year Warranty Features

- Emergency Disconnect Switch Standard
- Solid State Speed Control Not Available
- Aluminum Bladed Propellers
- Integral Vibration Isolators
- Spun Aluminum Housing
- Wall or Roof Mount
- Bird Screen



"Airmaster Fan certifies that Model ARD shown herein is (or are) licensed to bear the AMCA Seal. The ratings shown are based on tests and procedures performed in accordance with AMCA Publications 211 and AMCA Publication 311 and comply with the requirements of the AMCA Certified Ratings Program."

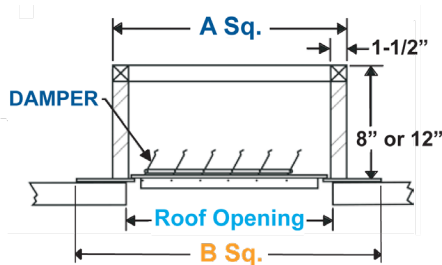


Prop Dia.	ARD Dimensions (in.)				
	Ht	W	B	C	RO or WO
10"	9"	18"	2"	19"	13"
12"	11"	21½"	2"	19"	13"
14"	14"	27"	2"	21"	16"
18"	16"	34"	2"	26"	20"

115V, 1 Speed, 1 Phase, Open Drip Proof (ODP)

EDP No.	Prop Dia.	HP	RPM	Capacity (CFM) @ "SP in. W.G.								Ship Wt.
				0"	1/8"	1/4"	3/8"	1/2"	5/8"	3/4"	1"	
32644	10"	1/30	1500	525	330	225	140	---	---	---	---	12
32645	12"	1/10	1500	830	700	620	510	430	350	250	80	20
32646	14"	.17	1100	1160	880	790	650	520	390	240	---	34
32647	18"	1/3	1100	2420	2000	1610	1500	1300	1050	890	410	46

* Performance shown in for installation type A: Free Inlet, Free Outlet. Performance ratings do not include the effects of appurtenances in the airstream. Power rating (BHP) does not include transmission losses.



Roof Mount Damper

EDP No.	Used with Exhaust Fan EDP No.	Ship Wt
32452	32644, 32645	3
32453	32646	4
32454	32647	5

Curbs

EDP No.	Curb Size	Used with Models EDP No.	Curb Dimensions			
			A Sq.	B Sq.	Roof Opening	Use with Roof Damper EPD No.
31100	8"	32644, 32645	17 ¾"	23 ¾"	13"	32452
31101	12"	32644, 32654	17 ¾"	23 ¾"	13"	32452
31102	8"	32646	20"	24"	16"	32453
31103	12"	32646	20"	24"	16"	32453
31110	8"	32647	25"	29"	20"	32454
31111	12"	32647	25"	29"	20"	32454

Notes: Pitched and Peaked Curbs Available. Wall Mount Brackets Available, contact factory.

